

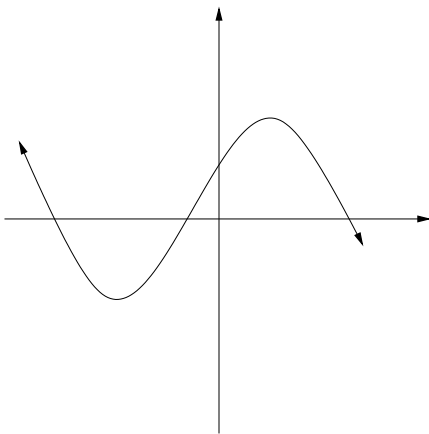
# Quiz One

	Truman	Kelly	Hui	
Section	12:30	AB	AD	
(circle one)	1:30	AA	AC	AE

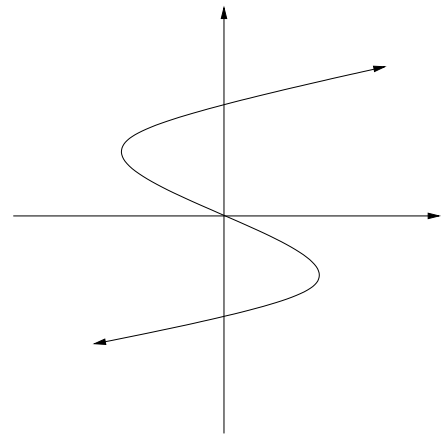
No notes. No calculators.

Simplify your answers. Show your work. Please put a box around **YOUR FINAL ANSWER**. There are 15 points on this quiz.

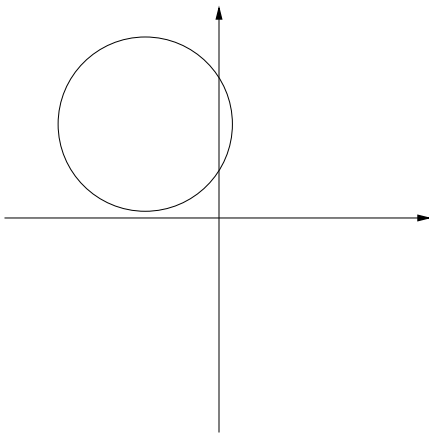
**1** (4 points) Which of the following graphs are graphs of functions? (Circle your answer, either **FUNCTION** or **NOT A FUNCTION**. You get one point for each correct answer, but you lose one point for each incorrect answer.)



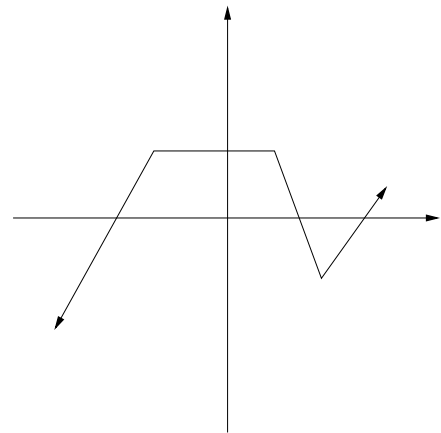
FUNCTION or NOT A FUNCTION



FUNCTION or NOT A FUNCTION

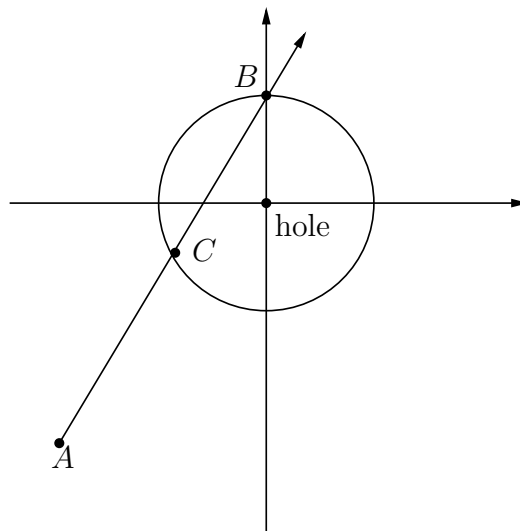


FUNCTION or NOT A FUNCTION



FUNCTION or NOT A FUNCTION

You are practicing your putting at the local golf course. There is a circular green with radius 6 feet with the hole at the center of the green. Your ball is at the point  $A$  in the picture to the right, 14 feet below and 10 feet to the left of the hole. You putt the ball, and it travels at a constant speed of 3 feet per second through the green and out over the point  $B$ , directly above the hole. (Warning: the picture is not drawn to scale!)



2 (3 points) Find the distance the golf ball travels from point  $A$  to point  $B$ .

3 (3 points) Find the time it takes the ball to travel from point  $A$  to point  $B$ .

4 (5 points) Find the coordinates (in the coordinate system given) of the point  $C$  where the ball enters the green.

5 **Bonus Question** (1 point) What are the names of your instructor and teaching assistant? In what building is the Math Study Center (MSC) located?

Instructor: \_\_\_\_\_ TA: \_\_\_\_\_

MSC is in: \_\_\_\_\_