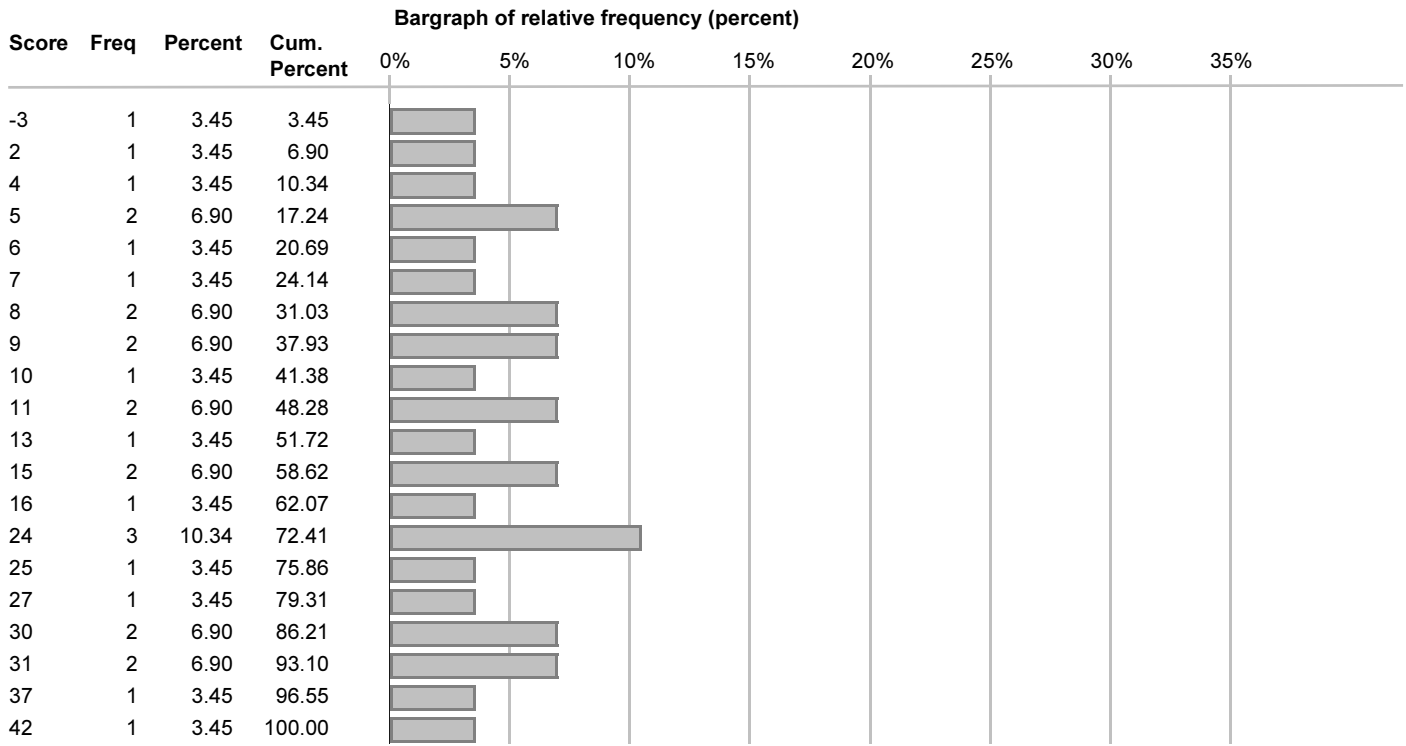


SCORE ROSTER by student number/last 4 digits

Student Id	MidTerm1
0014	5.00
0110	42.00
0584	15.00
0685	25.00
0968	5.00
1011	9.00
1107	9.00
1396	-3.00
1467	27.00
1637	30.00
2174	13.00
2506	11.00
2508	16.00
2565	10.00
2828	15.00
2867	37.00
4243	8.00
5479	11.00
5607	8.00
5722	2.00
6593	4.00
6958	30.00
7402	6.00
8401	31.00
9284	24.00
9395	31.00
9854	24.00
9917	24.00
9951	7.00

29 students listed on this roster.

FREQUENCY DISTRIBUTION for MidTerm1



1 student = 3.45% of the group.

Score Name	Number of Students	Average Score	Standard Deviation	Largest Observed Score	Smallest Observed Score
MidTerm1	29	16.41	11.44	42.00	-3.00

ITEM ANALYSIS for keyed score: MidTerm1

Item	Mean	StDev	Difficulty	Discrimination	Alternative	Weight	Means	Frequencies	Distribution
1	0.45	0.89	45 - Hard	0.27 - Fair	A	1.00	17.86	21 72.4%	
					B	-1.00	11.00	8 27.6%	
2	0.48	0.81	48 - Hard	0.48 - Good	A	-1.00	8.67	6 20.7%	
					B	1.00	20.00	20 69.0%	
					omit	0.00	3.33	3 10.3%	
3	0.24	0.82	24 - Hard	0.21 - Fair	A	1.00	20.07	14 48.3%	
					B	-1.00	16.14	7 24.1%	
					C	0.00	8.00	1 3.4%	
					omit	0.00	9.57	7 24.1%	
4	0.66	0.76	66 - Medium	0.38 - Good	A	1.00	17.67	24 82.8%	
					B	-1.00	6.60	5 17.2%	
5	0.59	0.77	59 - Medium	0.42 - Good	A	1.00	18.77	22 75.9%	
					B	-1.00	8.00	5 17.2%	
					omit	0.00	3.00	2 6.9%	
6	0.79	0.55	79 - Medium	0.25 - Fair	A	1.00	16.80	25 86.2%	
					B	-1.00	7.50	2 6.9%	
					omit	0.00	9.00	2 6.9%	
7	0.38	0.85	38 - Hard	0.42 - Good	A	1.00	20.00	18 62.1%	
					B	-1.00	9.86	7 24.1%	
					omit	0.00	9.00	4 13.8%	
8	0.72	0.52	72 - Medium	0.46 - Good	A	1.00	18.95	22 75.9%	
					B	-1.00	10.00	1 3.4%	
					omit	0.00	4.67	6 20.7%	
9	0.38	0.81	38 - Hard	-0.08 - Poor	A	1.00	16.76	17 58.6%	
					B	-1.00	21.67	6 20.7%	
					omit	0.00	8.33	6 20.7%	
10	0.48	0.72	48 - Hard	0.32 - Good	A	1.00	18.33	18 62.1%	
					B	-1.00	7.75	4 13.8%	
					omit	0.00	14.43	7 24.1%	
11	0.79	0.55	79 - Medium	0.17 - Fair	A	1.00	16.68	25 86.2%	
					B	-1.00	13.50	2 6.9%	
					omit	0.00	4.50	2 6.9%	
12	0.93	0.25	93 - Easy	0.35 - Good	A	1.00	16.56	27 93.1%	
					B	-1.00	0.00	0 0.0%	
					omit	0.00	1.00	2 6.9%	
13	0.24	0.90	24 - Hard	0.32 - Good	A	-1.00	13.56	9 31.0%	
					B	1.00	20.44	16 55.2%	
					omit	0.00	5.00	4 13.8%	
14	0.28	0.78	28 - Hard	0.65 - Good	A	1.00	24.93	14 48.3%	
					B	-1.00	9.67	6 20.7%	
					omit	0.00	6.78	9 31.0%	
15	0.59	0.67	59 - Medium	0.36 - Good	A	1.00	18.45	20 69.0%	
					B	-1.00	7.00	3 10.3%	
					omit	0.00	11.50	6 20.7%	
16	0.45	0.77	45 - Hard	0.45 - Good	A	-1.00	7.60	5 17.2%	
					B	1.00	19.78	18 62.1%	
					omit	0.00	11.50	6 20.7%	
17	0.34	0.76	34 - Hard	0.48 - Good	A	1.00	21.87	15 51.7%	
					B	-1.00	10.40	5 17.2%	
					omit	0.00	9.56	9 31.0%	

Item	Mean	StDev	Difficulty	Discrimination	Alternative	Weight	Means	Frequencies	Distribution
18	0.28	0.74	28 - Hard	0.69 - Good	A	1.00	25.77	13 44.8%	
					B	-1.00	8.80	5 17.2%	
					omit	0.00	8.09	11 37.9%	
19	0.62	0.55	62 - Medium	0.38 - Good	A	1.00	19.95	19 65.5%	
					B	-1.00	26.00	1 3.4%	
					omit	0.00	5.89	9 31.0%	
20	0.21	0.71	21 - Hard	0.08 - Poor	A	1.00	17.82	11 37.9%	
					B	-1.00	16.20	5 17.2%	
					omit	0.00	14.85	13 44.8%	
21	0.17	0.65	17 - Hard	0.09 - Poor	A	1.00	18.44	9 31.0%	
					B	-1.00	16.25	4 13.8%	
					omit	0.00	15.00	16 55.2%	
22	0.07	0.69	7 - Hard	-0.12 - Poor	A	-1.00	23.17	6 20.7%	
					B	1.00	17.88	8 27.6%	
					omit	0.00	12.80	15 51.7%	
23	0.21	0.66	21 - Hard	0.46 - Good	A	-1.00	11.25	4 13.8%	
					B	1.00	24.10	10 34.5%	
					omit	0.00	12.27	15 51.7%	
24	-0.48	0.72	-48 - Hard	-0.33 - Poor	A	-1.00	21.50	18 62.1%	
					B	1.00	17.50	4 13.8%	
					omit	0.00	4.71	7 24.1%	
25	0.21	0.80	21 - Hard	0.40 - Good	A	1.00	22.00	13 44.8%	
					B	-1.00	12.00	7 24.1%	
					omit	0.00	11.11	9 31.0%	
26	0.28	0.83	28 - Hard	0.43 - Good	A	1.00	21.27	15 51.7%	
					B	-1.00	10.86	7 24.1%	
					omit	0.00	10.43	7 24.1%	
27	0.38	0.76	38 - Hard	0.55 - Good	A	-1.00	11.00	5 17.2%	
					B	1.00	22.88	16 55.2%	
					omit	0.00	5.50	8 27.6%	
28	0.41	0.85	41 - Hard	0.30 - Good	A	1.00	18.79	19 65.5%	
					B	-1.00	11.71	7 24.1%	
					omit	0.00	8.33	3 10.3%	
29	0.21	0.92	21 - Hard	0.58 - Good	A	1.00	22.25	16 55.2%	
					B	-1.00	8.90	10 34.5%	
					omit	0.00	8.33	3 10.3%	
30	-0.34	0.80	-34 - Hard	-0.63 - Poor	A	-1.00	24.38	16 55.2%	
					B	1.00	7.83	6 20.7%	
					omit	0.00	7.00	7 24.1%	
31	0.76	0.57	76 - Medium	0.18 - Fair	A	1.00	16.79	24 82.8%	
					B	-1.00	13.00	2 6.9%	
					omit	0.00	8.33	3 10.3%	
32	0.62	0.49	62 - Medium	0.45 - Good	A	1.00	19.72	18 62.1%	
					B	-1.00	0.00	0 0.0%	
					omit	0.00	9.36	11 37.9%	
33	0.52	0.68	52 - Medium	0.41 - Good	A	1.00	20.44	18 62.1%	
					B	-1.00	13.67	3 10.3%	
					omit	0.00	6.50	8 27.6%	
34	0.00	0.91	0 - Hard	0.48 - Good	A	-1.00	12.92	12 41.4%	
					B	1.00	24.50	12 41.4%	
					omit	0.00	5.40	5 17.2%	

Item	Mean	StDev	Difficulty	Discrimination	Alternative	Weight	Means	Frequencies	Distribution
35	0.59	0.62	59 - Medium	0.00 - Poor	A	1.00	16.32	19 65.5%	
					B	-1.00	20.50	2 6.9%	
					omit	0.00	13.50	8 27.6%	
36	0.48	0.56	48 - Hard	0.28 - Fair	A	1.00	18.80	15 51.7%	
					B	-1.00	8.00	1 3.4%	
					omit	0.00	13.23	13 44.8%	
37	0.14	0.78	14 - Hard	0.02 - Poor	A	1.00	20.36	11 37.9%	
					B	-1.00	22.00	7 24.1%	
					omit	0.00	8.55	11 37.9%	
38	0.24	0.68	24 - Hard	0.52 - Good	A	-1.00	10.75	4 13.8%	
					B	1.00	24.55	11 37.9%	
					omit	0.00	11.14	14 48.3%	
39	0.41	0.62	41 - Hard	0.48 - Good	A	1.00	21.71	14 48.3%	
					B	-1.00	8.00	2 6.9%	
					omit	0.00	11.08	13 44.8%	
40	0.34	0.66	34 - Hard	0.39 - Good	A	1.00	22.62	13 44.8%	
					B	-1.00	16.67	3 10.3%	
					omit	0.00	9.38	13 44.8%	
41	-0.24	0.86	-24 - Hard	-0.26 - Poor	A	1.00	14.00	8 27.6%	
					B	-1.00	20.20	15 51.7%	
					omit	0.00	11.33	6 20.7%	
42	0.55	0.56	55 - Medium	0.20 - Fair	A	1.00	17.47	17 58.6%	
					B	-1.00	6.00	1 3.4%	
					omit	0.00	14.27	11 37.9%	
43	0.24	0.62	24 - Hard	0.40 - Good	A	-1.00	11.33	3 10.3%	
					B	1.00	22.80	10 34.5%	
					omit	0.00	12.94	16 55.2%	
44	0.03	0.67	3 - Hard	0.42 - Good	A	1.00	28.14	7 24.1%	
					B	-1.00	15.00	6 20.7%	
					omit	0.00	11.75	16 55.2%	
45	0.41	0.49	41 - Hard	0.46 - Good	A	1.00	22.17	12 41.4%	
					B	-1.00	0.00	0 0.0%	
					omit	0.00	11.65	17 58.6%	
46	0.10	0.66	10 - Hard	0.50 - Good	A	1.00	24.50	8 27.6%	
					B	-1.00	8.20	5 17.2%	
					omit	0.00	14.75	16 55.2%	
47	0.03	0.67	3 - Hard	0.18 - Fair	A	1.00	21.00	7 24.1%	
					B	-1.00	15.33	6 20.7%	
					omit	0.00	14.75	16 55.2%	
48	0.17	0.59	17 - Hard	0.02 - Poor	A	1.00	20.13	8 27.6%	
					B	-1.00	25.00	3 10.3%	
					omit	0.00	13.06	18 62.1%	